

Conferencia: "Creation of e-Portfolio System for the New Digital Era"

Dr. Paul Kim

Chief Technology Officer y Assistant Dean de Stanford University School of Education. El expositor presentó un nuevo enfoque de diseño del sistema *e-portfolio* (*portfolio* electrónico o digital).

Instituto de Educación
Universidad ORT Uruguay
30 de julio de 2012

E-Portfolio

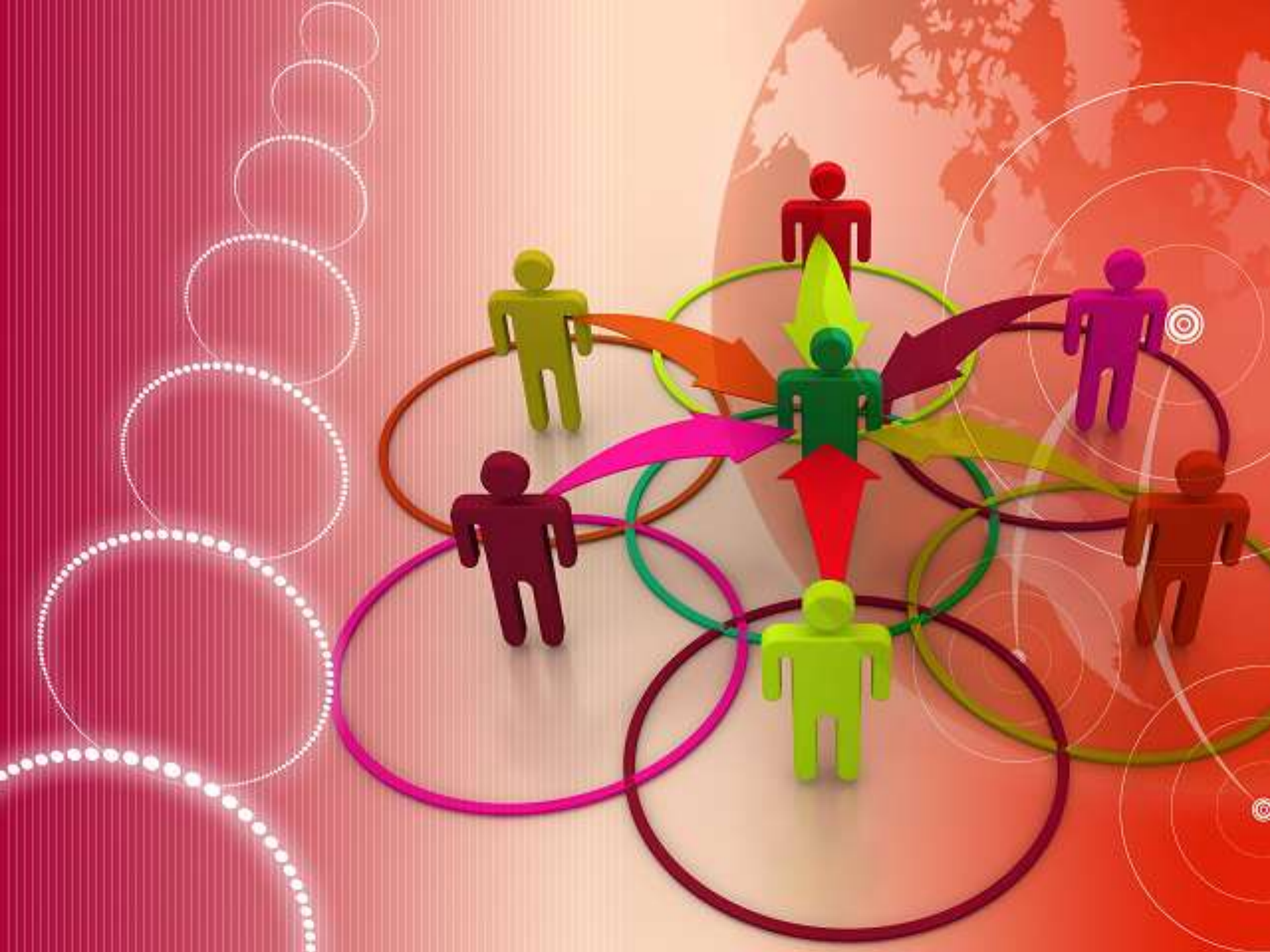
Paul Kim, Ph.D.
phkim@stanford.edu

Stanford University



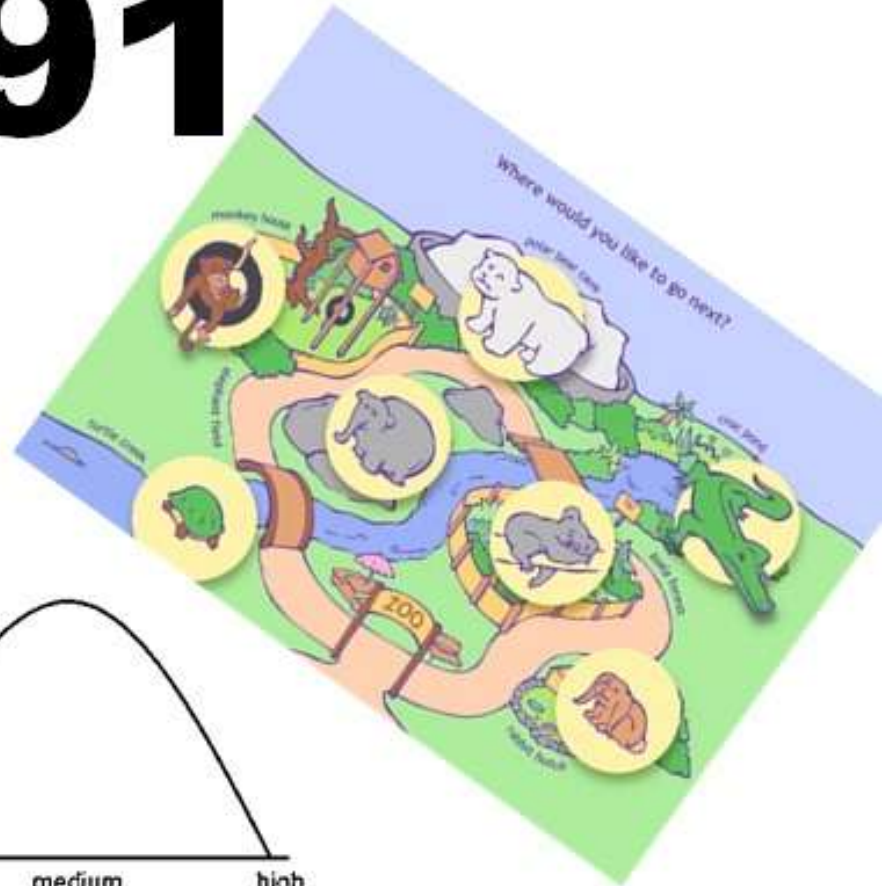








EDUC 391








?

Need a system?

E-portfolio

- ▶ What is it?
 - ▶ Is it a personal website?
 - ▶ Is it a university web portal service?
 - ▶ Is it a learning or assessment system?
 - ▶ What is it for?
- 

Penn State e-Portfolio

Home About e-Portfolios Build It! Gallery Faculty/Advisors

Search

Mary Jo Galati



Major:
Class of 2001

Check out some of the evidence included in Amy's Personal Web Space e-Portfolio by clicking on the snapshot links below!

Check out some of the evidence included in Mary Jo's Personal Web Space e-Portfolio by clicking on the snapshot links below!

SNAPSHOTS

- ▶ [Mary Jo's e-Portfolio Home Page](#)
- ▶ [Linking Philosophy to Evidence](#)
- ▶ [Explaining Student Work](#)
- ▶ [Science Talk Lesson Plan](#)

Snapshots taken: 8/9/2002.

Welcome to My Online Teaching Portfolio!

Mary Jo Galati

Click on the apple links below to see my online portfolio, PSU coursework, or my classroom website. You can use the apples to navigate throughout my website. Have fun!

Home C-5 Class Web Online Portfolio PSU & PDS

A pleasant, well organized home page with clear navigational links to the information that is available deeper in her site! Well done!

Department of Computer Science

SARAH LIM CHOI KEUNG - ePORTFOLIO

- Home
- About the Department
- Calendar of Events
- Admissions
- Teaching
- Research
- People Directory
 - Research Students
 - Sarah Lim Choi Keung
- Intranet

ABOUT ME

I am a PhD researcher in the [Intelligent and Adaptive Systems Group](#) in the [Department of Computer Science](#) at the [University of Warwick](#). My supervisor is [Dr Nathan Griffiths](#).

Prior to starting my PhD in September 2005, I obtained BSc and BSc(Hons) degrees from the [University of South Africa \(UNISA\)](#) and the [University of KwaZulu-Natal](#), South Africa, respectively. After doing some teaching at undergraduate level in Mauritius at the [Charles Telfair Institute](#), I went on to do an MSc degree at [Lancaster University](#), UK.

RESEARCH

My area of research is trust and reputation in multi-agent systems. The focus of my work is on how agents can efficiently interact with one another, despite the uncertainty involved. The ability of agents to adapt to changes in their environment and dealing with collusive behaviour are some of the issues I am interested in resolving.

A presentation on some initial research work was given for the 5th Warwick Postgraduate Colloquium in Computer Science (WPCCS'07): "Improving Agents' Adaptation to Environmental Changes Using Trust and Reputation".

TEACHING

I have been a lab demonstrator and seminar tutor since 2005 in the Department of Computer Science. I have also been involved in the marking of coursework and exam invigilation and marking.



Sarah Lim Choi Keung

ADDRESS:

Department of Computer Science

University of Warwick

Coventry CV4 7AL

EMAIL:

slick@dcs.warwick.ac.uk

Not signed in
Sign in

Powered by [Sitebuilder](#)
© MMVII | [Privacy](#)
[Accessibility](#)



Access Key
Go
View: Public

- Menu
- Home
- ShareIt
- Resume
- Showcase
- Certifications
- Blog
- Login



Janet Meyer, Ms
Academic Specialist
Part-time Lecturer

Email Locked
Office:

1 All

About Me:

My name is Janet Meyer. I am an academic specialist/part time lecturer in the Freshman Engineering Program of the Purdue School of Engineering and Technology at Indiana University Purdue University Indianapolis (IUPUI). Prior to July 2006 my job title was Freshman Engineering advisor. I have been in this position since March, 1999. My current job duties include academic advising, teaching, and other work related to academic programming.

I developed and now teach the engineering learning community course, ENGR 195. IUPUI is a national leader in the learning community movement. Learning communities have a variety of forms but the most common variant found at IUPUI consists of a 1 credit hour course taken in the first semester of a student's undergraduate enrollment. Learning communities are designed to further a student's orientation to university life and provide students with the success skills needed for college-level work. Additionally, school-specific learning communities introduce students to the major of their choice.

I am also a mother and wife. I've been married for almost 34 years and have nine children. I enjoy my family very much. We are well on our way in "launching" our children into the world. Our youngest child will be a freshman in college this fall. Several live in the Indianapolis area and several of the others are now out on their own and live in interesting parts of the country - Chicago, Denver, San Francisco and Coulee Dam, WA. My husband and I enjoy visiting them and seeing what they are doing with their lives. We both love to travel. I also enjoy reading and Sudoku puzzles.

Career Interests

I am currently completing the masters degree program in higher education and student affairs. I am not seeking any career position since my current job is a professional position. My goal at this time is to stay in my current position. I really love what I do. My job provides a plethora of interesting experiences and challenging work. However, although it is not necessary to my duties, I decided to go ahead and earn a second master's degree. I love learning and the university environment so I went back to school and I am in the Indiana University Higher Education Student Affairs master's program. I enjoy the coursework (although as a person



- QuickLinks**
- My School
 - National Academy of Engr

- Shared Objects**
- Public

Blog (Recent)

6/10/2007

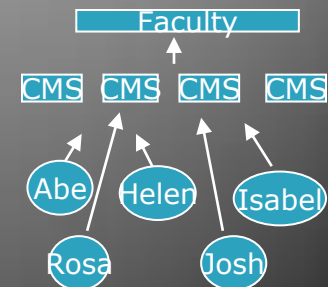
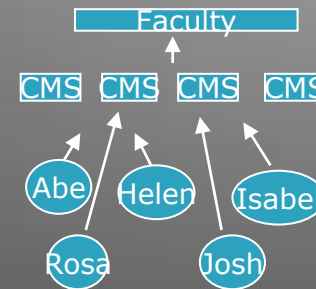
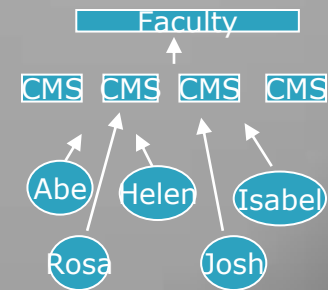
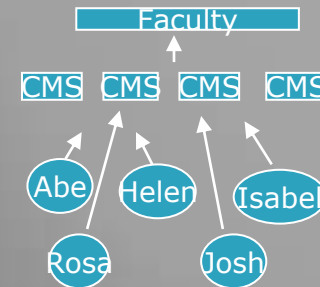
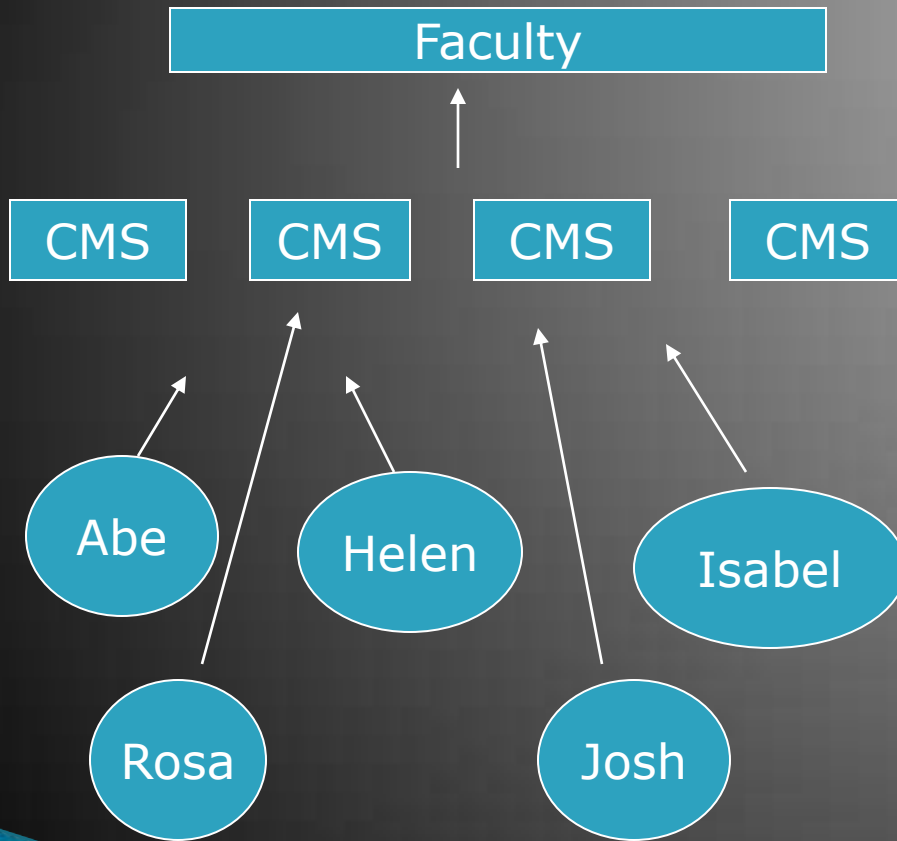
Janet Meyer's Blog

I have created an entry in Epsilon. I've been told that it is as easy as making a MySpace page. ...

[More...](#)

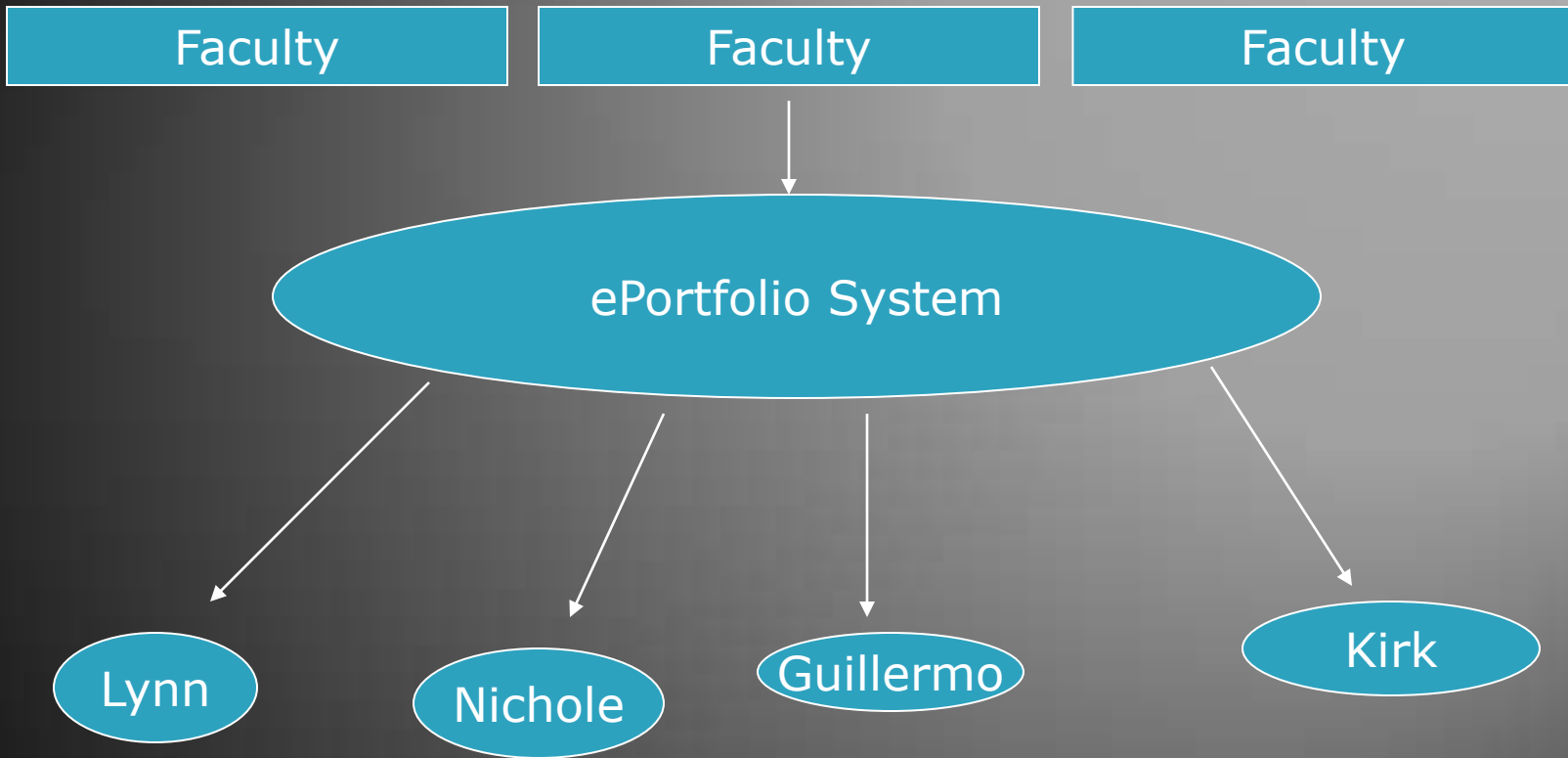
RSS 2.0

Segmented Learning



ePortfolios:

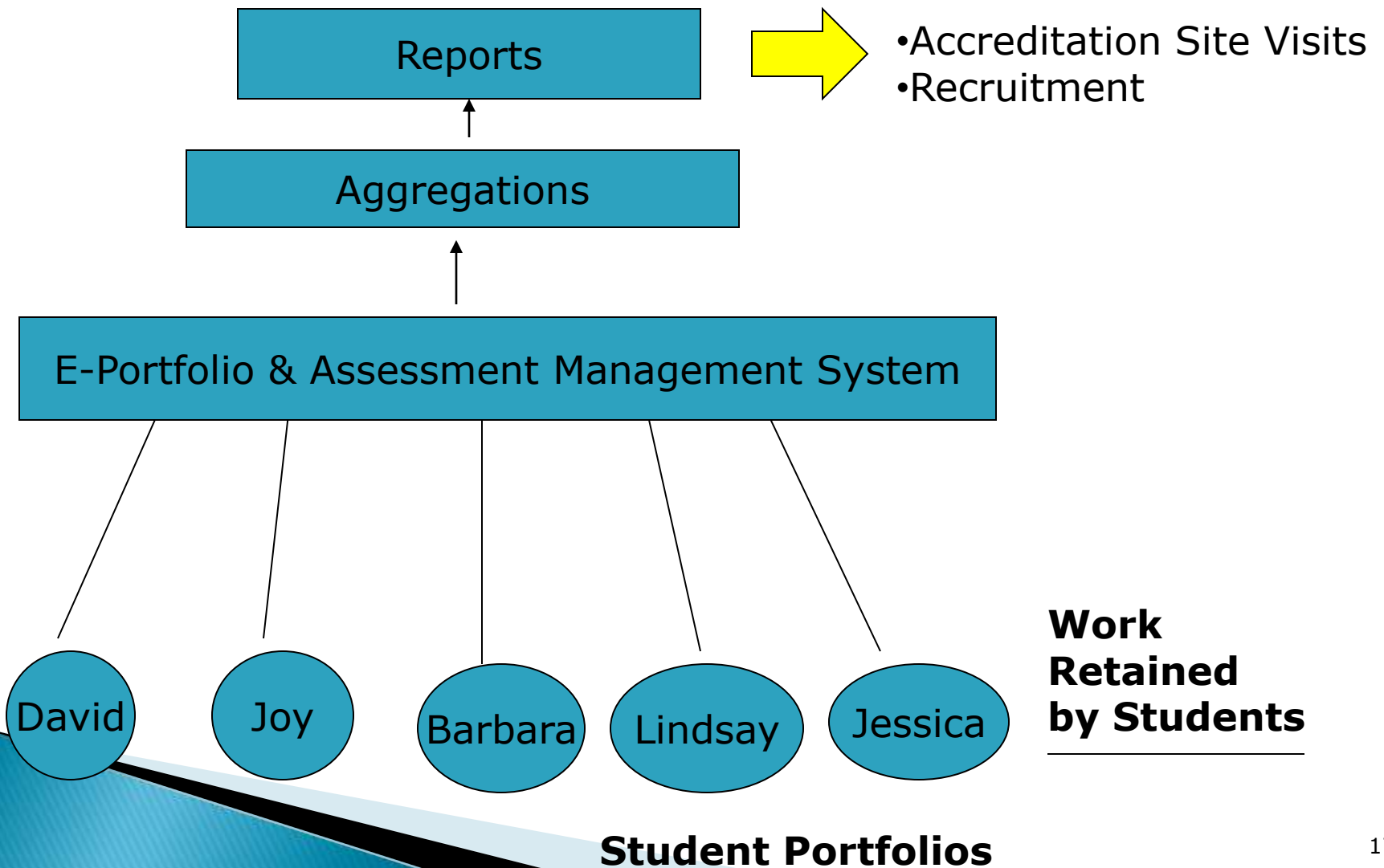
Students have constant Access
to establish and develop own portfolios for multiple purposes.



**Students set
Permissions**

Uses for ePortfolios

1. Individual reflective portfolio
2. Advising management system
3. Resume builder
4. Citizen portfolio – Workforce development
5. Faculty portfolio
6. Showcase portfolio
7. Identity development portfolio
8. Assessment management system



Portfolio Development Process



Technology Value Added

Collection



Digital Archive (the Working Portfolio)

- What is the content of portfolio items (determined by the assessment context) and the type of evidence to be collected?
- What multimedia materials will you gather that represent a learner's achievement?

Selection



Hyperlinking/Thinking/Metacognition

- How will you select the specific artifacts from the abundance of the working portfolio, to demonstrate achievement of the portfolio's stated goals?
- What are your criteria for selecting artifacts and for judging merit?
- How will you organize the digital artifacts?

Reflection and Direction



Storytelling

- What do your selected artifacts say about you and your learning?
- How will you record self-reflection on work and achievement of goals?
- How will you record goals for future learning based on the personal reflections and feedback?
- Portfolios tell a story. What story does your portfolio tell?

Presentation



Publishing

- How will you use some of the graphics capabilities of current computer systems to add style and flair to the portfolio, and to interject personality and individuality?
- How will you record the portfolio to an appropriate presentation and storage medium?
- How will you or your students present the finished portfolio to an appropriate audience?

Assessment and Evaluation



Collaboration

- How will you share work and record faculty feedback on student work and achievement of goals?
- How will you evaluate the portfolio's effectiveness in light of its purpose and the assessment context?
- Depending on portfolio context, how will you use portfolio evidence to make instruction/learning decisions?
- Will you develop a collection of exemplary portfolio artifacts for comparison purposes?

Current Students

- ▶ Current students can check their overall degree and credentialing progress.
- ▶ Update their biographic information.
- ▶ Update digital portfolios for various purposes.
- ▶ Share learning strategies or reflections while collaborating on group work.



Faculty

- ▶ Enter and review various assessment results and student data.
- ▶ Conduct data analyses using the built-in tools that link datasets from admission, internship evaluations, and university administrative databases.
- ▶ Enhance the curriculum based on research results.



Alumni

- ▶ Develop and augment their portfolios with digital artifacts such as videos, photos, PowerPoint presentations, or electronic documents resulted from their coursework, practicum training, or field works.
- ▶ Access learning resources for continued professional development.
- ▶ Update their contact information.
- ▶ Serve as cooperative mentors.



Administrative Staff

- ▶ Add course or program evaluation data.
- ▶ Assign roles and resources to accounts.
- ▶ Analyze data and generate reports.
- ▶ Update web services on the portal.
- ▶ Import datasets from work (e.g., schools where graduates are employed) - achievement test scores from school district.
- ▶ Generate reports for accreditation agencies
- ▶ Export STAT-ready data files



Potential Employers

- ▶ Examine student portfolios before and after graduation.
- ▶ Access electronic resumes and actual coursework.
- ▶ Review faculty remarks and internship evaluations.
- ▶ Make direct contact with students, faculty, and administration.(Conduct searches based on needs)




Supporting Community

- ▶ Advisors
- ▶ Work Supervisors
- ▶ Cooperative Mentors
- ▶ Alumni Network
- ▶ Industry Partners
- ▶ Investors




Future For University Web Portals

- ▶ More Open, but More Secured (Tiered)
 - ▶ Ubiquity of Access
 - ▶ Community-Integrated
 - ▶ Focus More on mROI (e.g., Learning Outcomes, Efficiency, Employability)
 - ▶ Accountability
 - ▶ Visibility
 - ▶ Identity
 - ▶ Creativity
 - ▶ Informal Learning Opportunity
- 

- ▶ Besides other functions of universities, the very obvious noble mission of higher education providers is to ensure that **students meet the learning goals while in school and perform respectably after graduation.**

- ▶ Higher education providers are pressured to develop and improve the methodology of **performance-based assessment**; establish and maintain the community and industry-based student development and support system; and initiate and track accountability for student learning progress, outcomes, and performance.

The turn-key web portal system should provide an array of services and tools for current students, alumni, faculty, administrator, supporting community, & potential employers.



E-portfolio Systems

- ▶ <https://www.iwebfolio.com/>
- ▶ <http://www.eportaro.com/>
- ▶ <http://chalkandwire.com/>
- ▶ <https://www.taskstream.com/>
- ▶ <http://www.tk20.com/>
- ▶ <http://www.concord-usa.com/>
- ▶ http://www.angellearning.com/products/eportfolio/learner_experience.html
- ▶ <https://mahara.org/>
- ▶ <http://www.avenetefolio.com/>

Average annual license fee = \$2 – \$60 per student or \$250,000 for institutional license. Additional storage, features, premium accounts cost more.



HOME

TOUR

CUSTOMERS

EDITIONS

SUPPORT

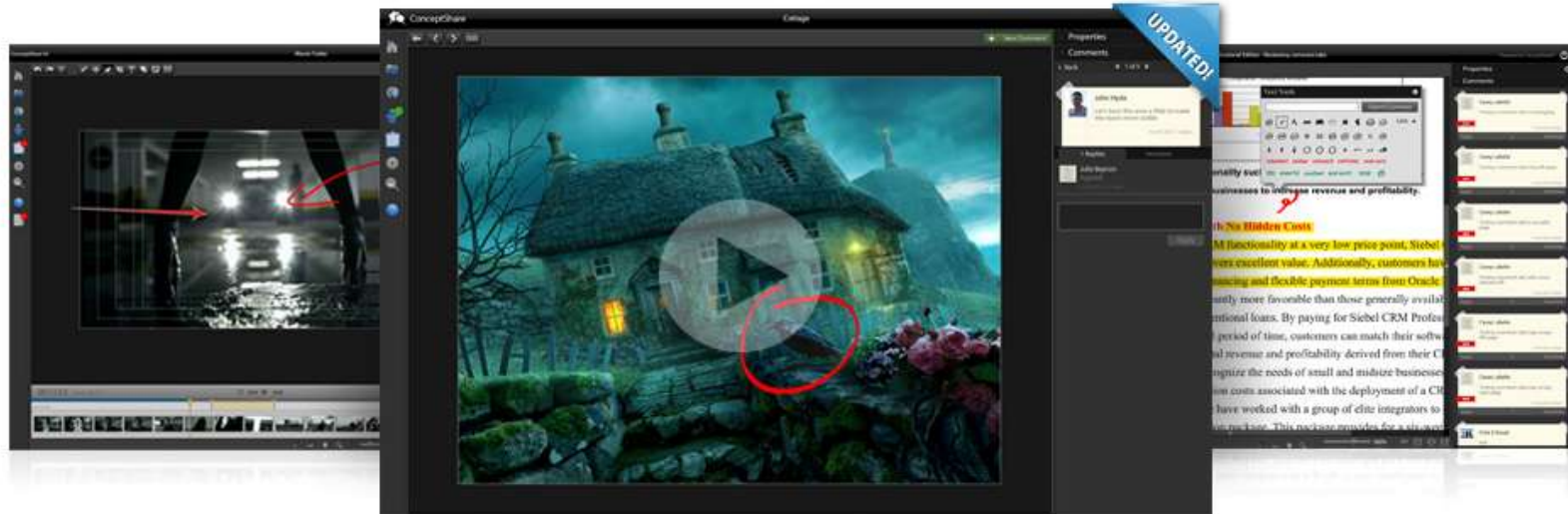
COMPANY

BLOG

TRY IT FREE

Share, Communicate, and Collaborate on Creative Work

ConceptShare makes it easy to share, communicate and collaborate on creative work. Fast and easy to use, ConceptShare helps creative teams and their clients work together to deliver assets on time, on spec.



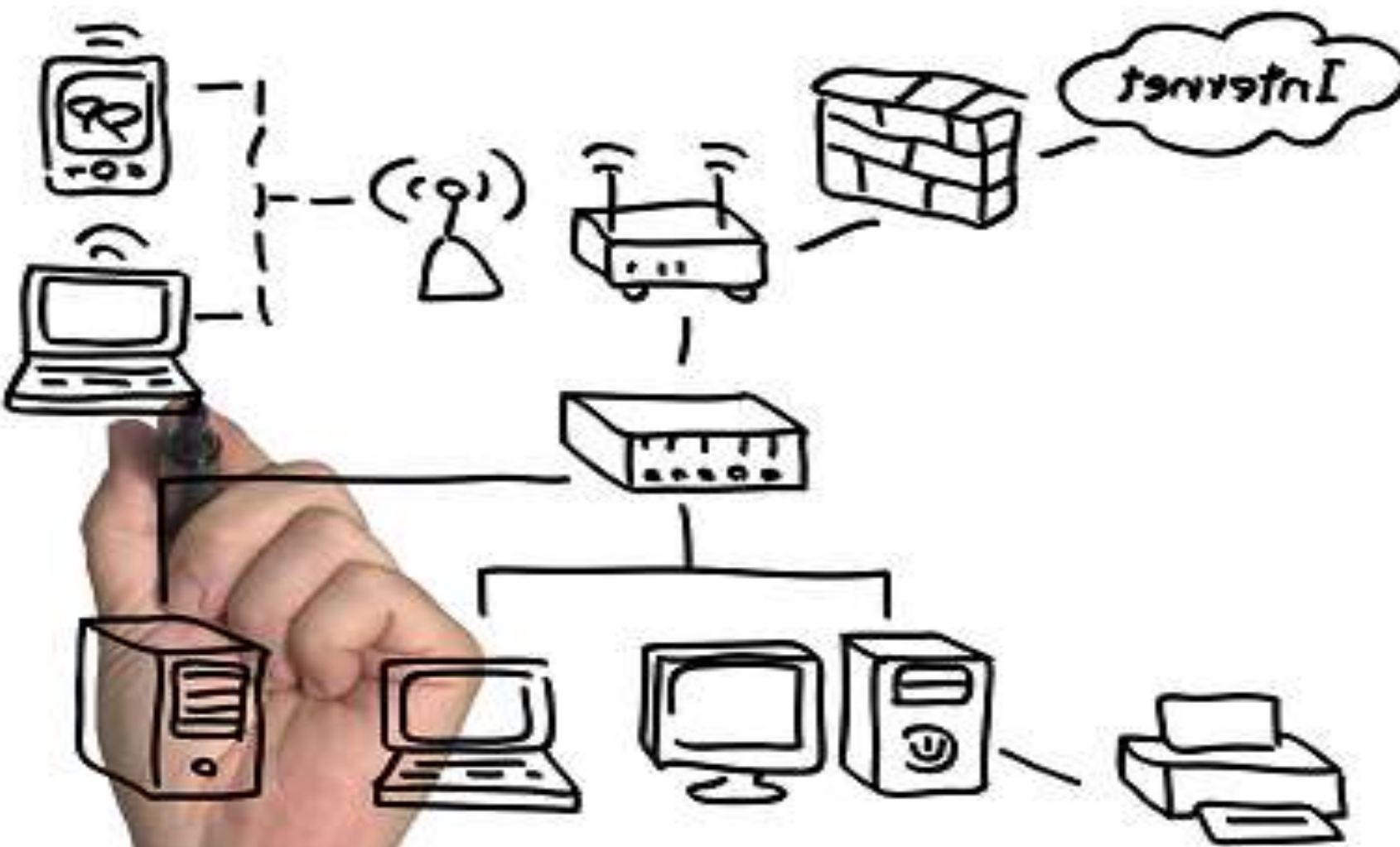
Challenges



How do you collect the evidence of leadership?



How do you capture the process quality?



How do you capture team work?



Creating a convincing cohesive message



Tips

- ▶ Tailor e-portfolio to your campus:
 - Small liberal arts: showcase student work; advisement management
 - State University: assessment management system
 - Community College: workforce development – use individual portfolio
 - Professional schools: assessment management system with standards for your field


Tips, 2

- ▶ Include writing, art, music, or architecture faculty – the traditional portfolio fields – on your e-portfolio task force
- ▶ Re-accreditation needs will drive broad implementation, but also do pilot implementation

Tips, 3

- ▶ It will all mean nothing if students aren't taught how to do "folio thinking" and how to build an e-portfolio.
- ▶ And will succeed if faculty use the production of the e-portfolio as the main project in the course

Potential Research Areas

- ▶ Achievement Metrics
 - ▶ Motivation
 - ▶ Organization & Visualization of Portfolio
 - ▶ Comprehension
 - ▶ Adoption, Implementation & Sustainability
- 

E-Portfolio

Paul Kim, Ph.D.
phkim@stanford.edu

Stanford University